



# What does the future hold for our water?

Public presentation on December 5, 2023, at 5 p.m.

Results of the studies on our water supply  
Strategic directions

# Introduction

Robert Benoît  
Mayor

# Presentation of the results

Pascal Smith  
Director General

# Pumping rate test results

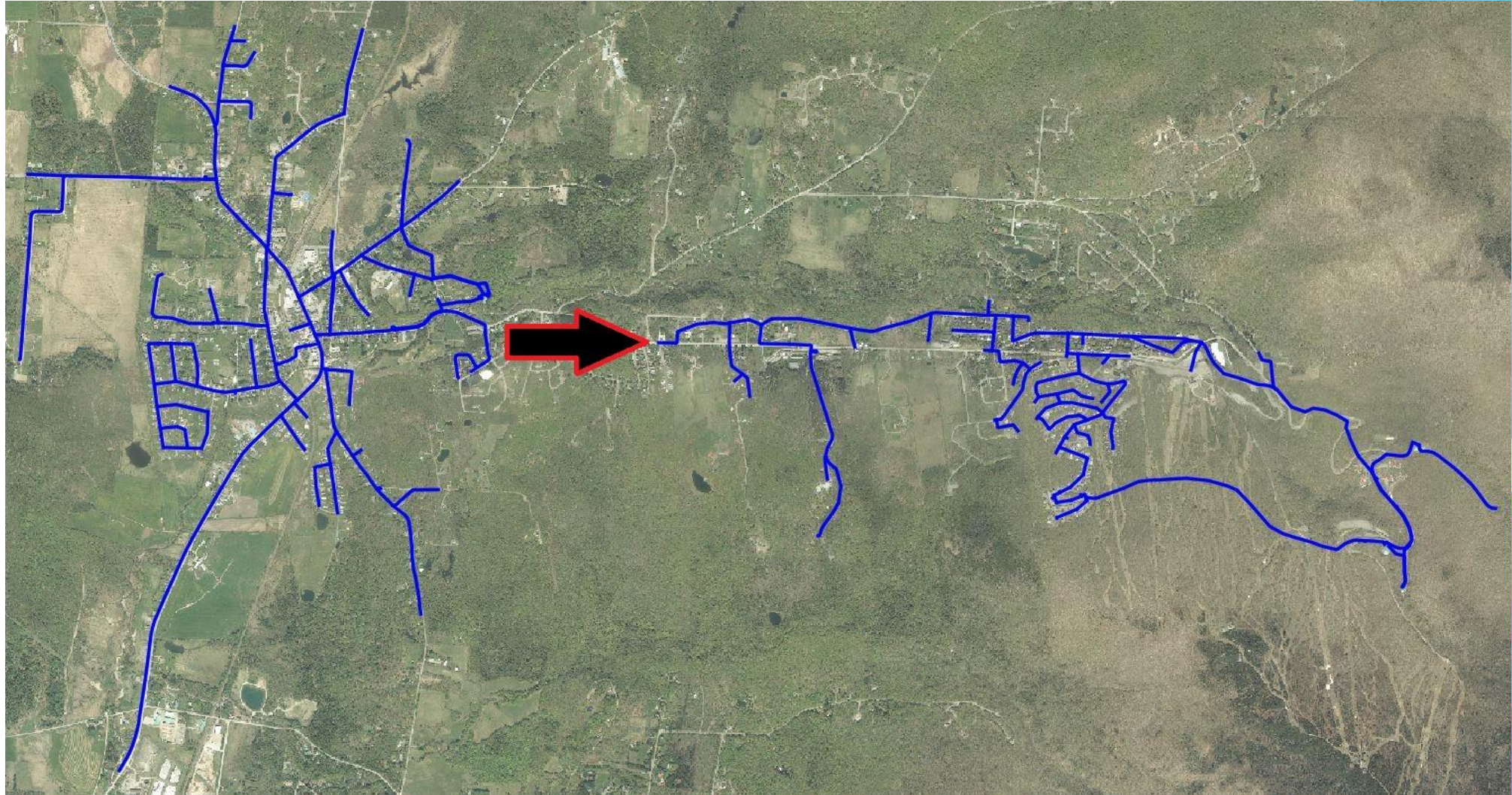
	<b>Academy sector (m<sup>3</sup>/day)</b>	<b>SU/PE-1-15 sector (m<sup>3</sup>/day)</b>	<b>Cumulative volume of the aquifer (m<sup>3</sup>/day)</b>
Current average extracted volume	≈ 600	-	600
Maximum pumping rate for the test	1634	1685	3319
Maximum pumping rate by sector	1838	2963	-
Maximum flow rate (simultaneous pumping of the 2 sectors)	1673	2628	4301
Maximum safe flow rate taking inflow into account			3300

# Technical guidelines

Titouan V. Perriollat

Director of Public Works and  
Fixed Assets

# General technical guidance



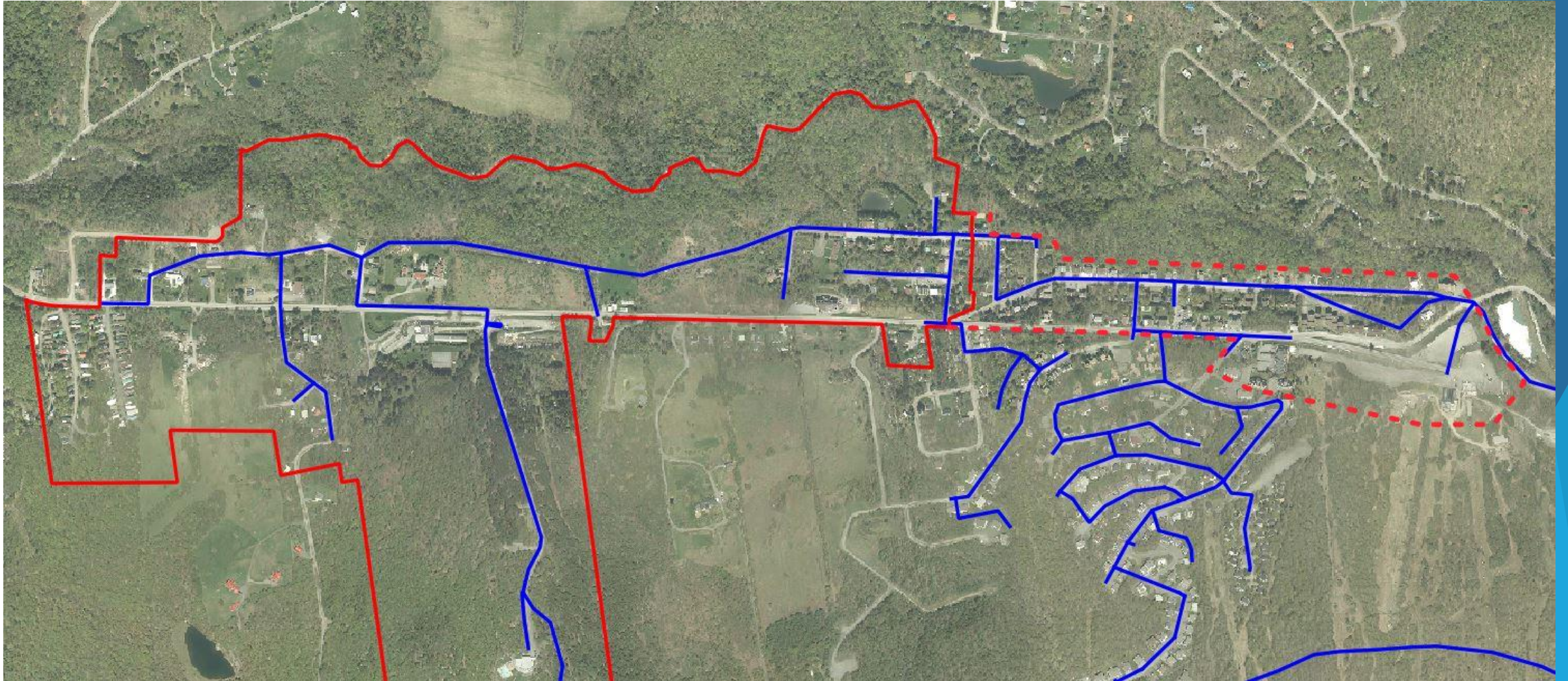
# Technical guidance Phase 1

- ▶ Elevating water from Highland reservoir to the mountain network
- ▶ Adding approximately 2,500 metres of pipe under Maple Street
- ▶ Installation of 3 booster pumps
- ▶ Potential extension of Highland reservoir
- ▶ Zones served
  - ▶ 21% to 38% of the mountain sector supplied by the village
  - ▶ Huttopia and Maple Street inns (21% zone)
  - ▶ Mobile home park (21% zone)
  - ▶ Esker, Gamache and Lassonde sector (21% zone)
  - ▶ Mont Sutton's ski lodge (38% zone)
  - ▶ Maple, Bernier, O'Brien and Vachon Streets (38% zone)
- ▶ Cost between \$7 and \$10 million, to be confirmed by an engineering study
- ▶ Technical and financial feasibility to be verified (38% zone)

# Phase 1 | Planned work



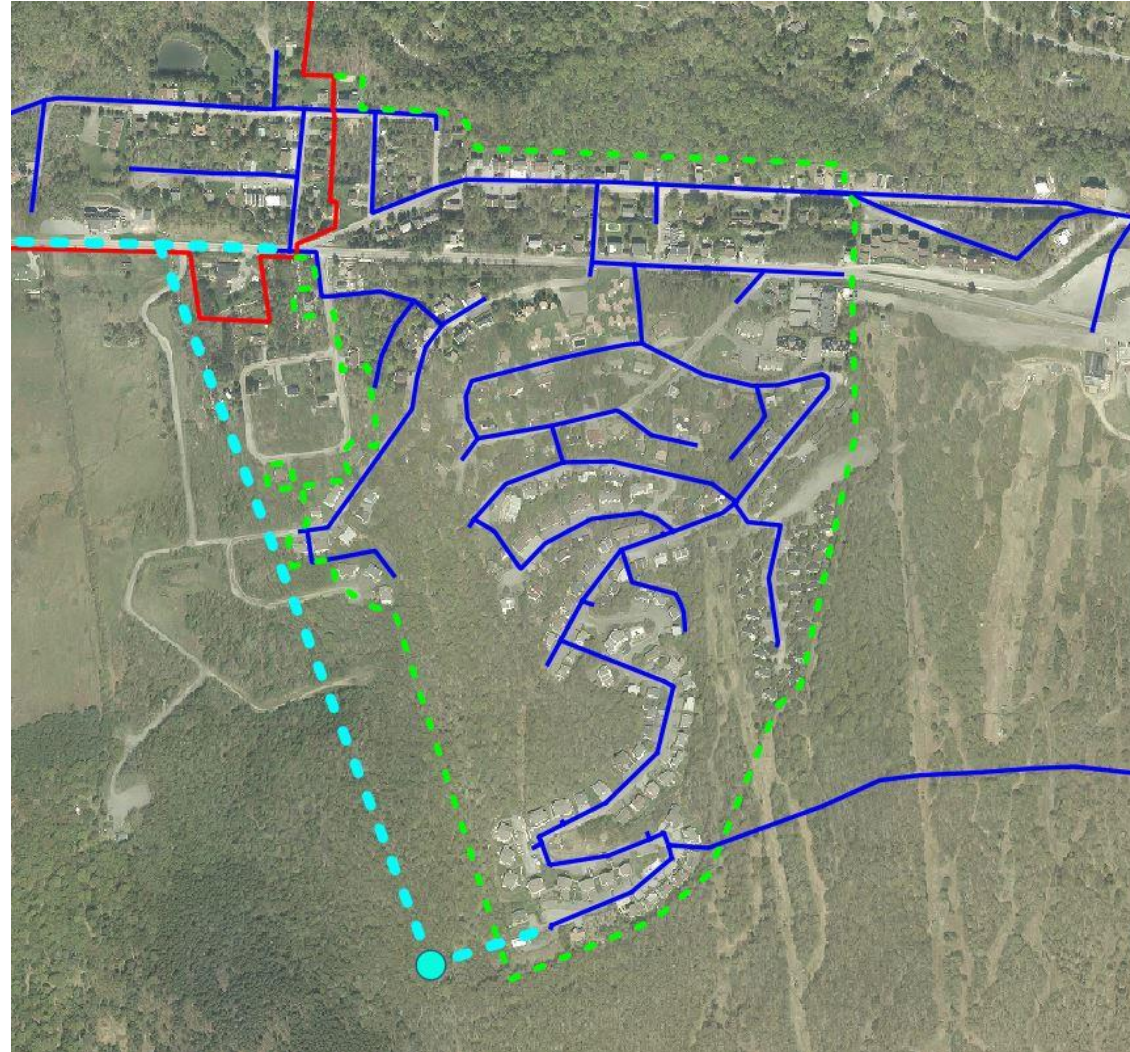
# Phase 1 | Target zone



# Technical guidance Phase 2

- ▶ Possibility of a 2<sup>nd</sup> phase in the future
- ▶ Objective: supplying the Boulanger sector and adjacent streets
- ▶ Installation of an additional 1,200 meters of pipe
- ▶ Installation of a new pressure booster
- ▶ Installation of a new reservoir
- ▶ 82% of the mountain sector supplied by the village
- ▶ Estimated cost: \$10 million, to be confirmed by an engineering study

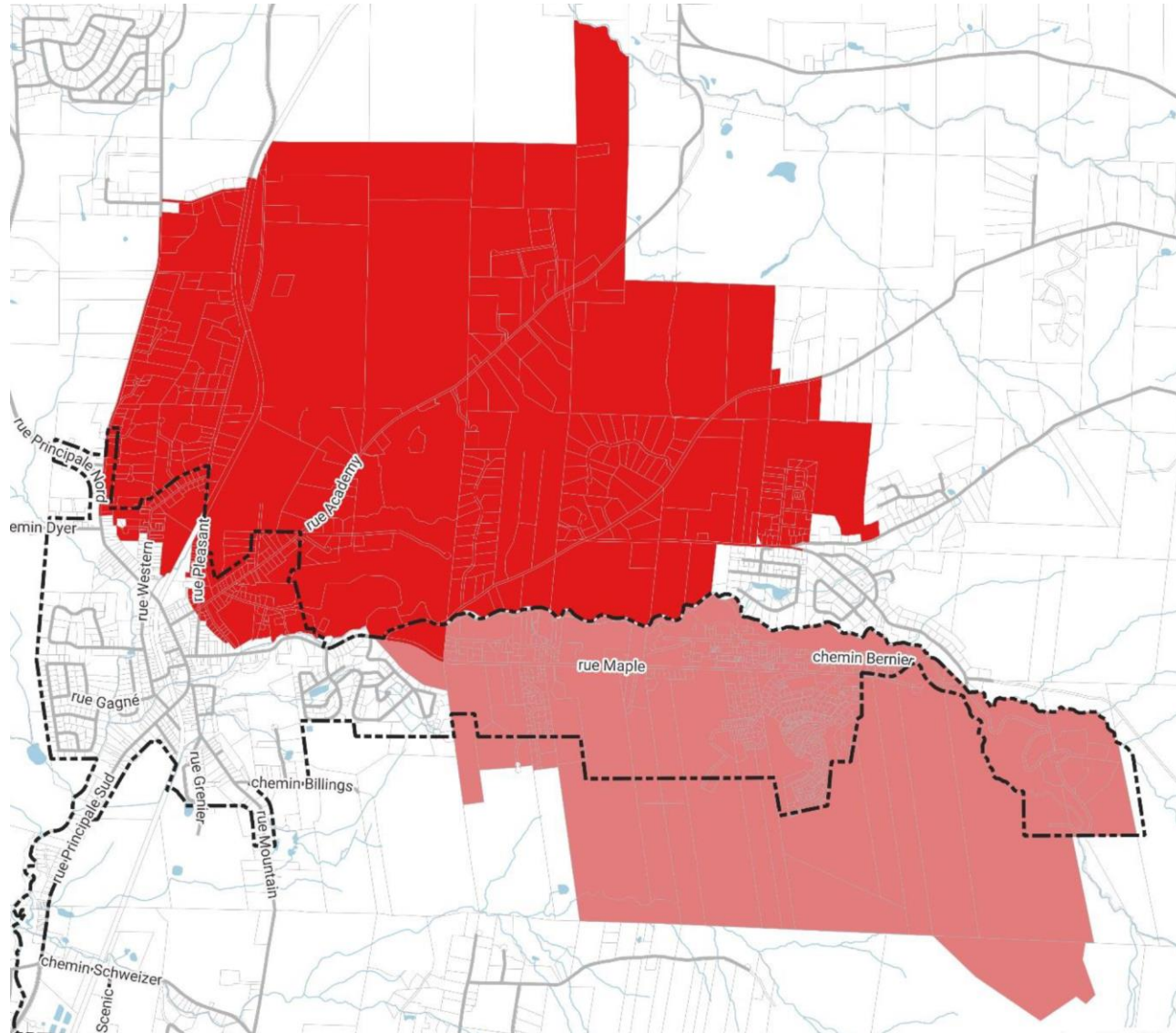
## Phase 2 | Target zone



# Regulatory follow-up

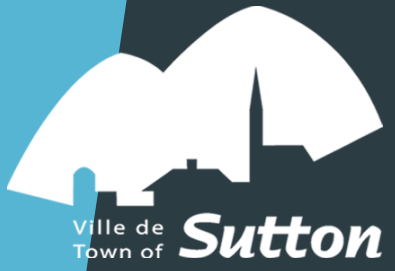
Claude Théberge  
Director of Urban and  
Land-Use Planning

# ICR | Targeted zones



# Conclusion

Robert Benoit  
Mayor



Questions?